



Atlas[®] NARROW BODY IMPLANTS

The Simple Solution for Denture Comfort[™]





ATLAS[®]

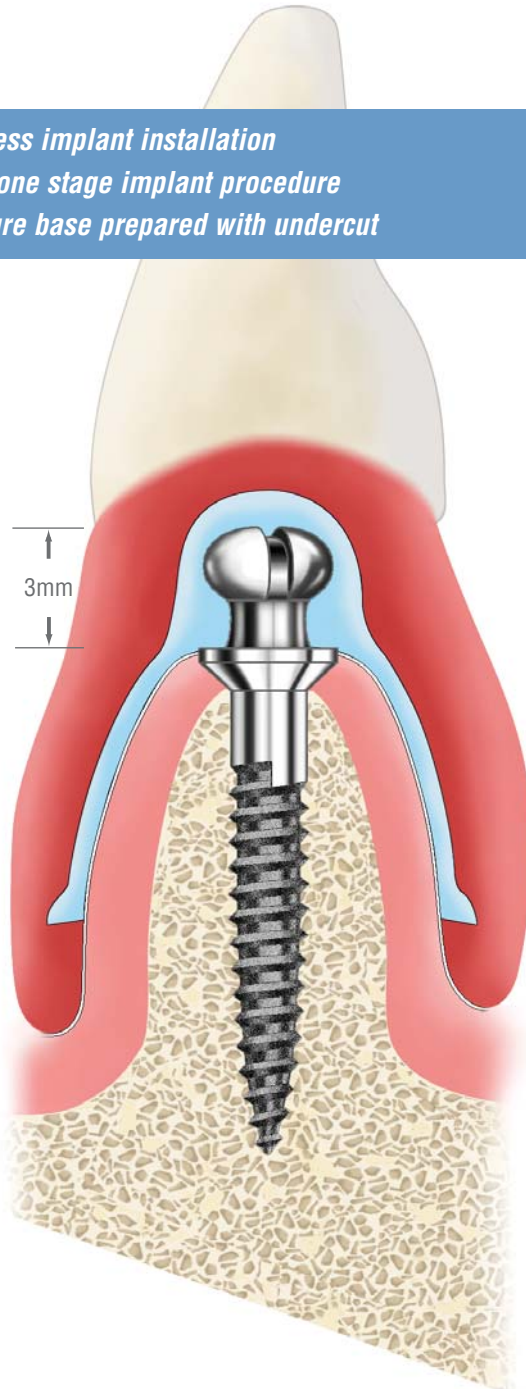
AN IMPLANT SYSTEM THAT FITS!

- *Fits thin ridges*
- *Fits your patient's budget*
- *Fits your practice*

Retains, stabilizes & cushions dentures with narrow body implants. No housings, no O-rings and no adhesives.

- *Flapless implant installation*
- *Easy one stage implant procedure*
- *Denture base prepared with undercut*

- *Tuf-Link silicone polymerized in 4-5 minutes*
- *Stress-free denture placement/removal*
- *60 minute procedure*



Tuf-Link resilient silicone liner firmly retained in the periphery seam-line provides secure retention and chewing comfort

Low profile 3mm ATLAS dome head creates balanced bilateral support with gentle passive retention without copings, O-rings or adhesives

ATLAS titanium alloy implants are texturized and packaged sterile

Tapered - end, self - threading design facilitates easy manual installation

ATLAS one piece implants are available in 1.8, 2.2 & 2.4mm dia. and 7, 10, & 14mm thread lengths

FDA indicated for long-term use or any length of time as decided by the health care provider.

THE SIMPLE FACTS ABOUT TOOTH LOSS

- **Twenty-five percent (25%) of all adults living in the USA aged 60 years and older have lost all of their teeth.** *1999-2002 National Health and Nutrition Examination Survey, Centers for Disease Control & Prevention, www.cdc.gov*
- **Loss of all teeth causes disability for most people who wear conventional dentures because they have difficulty performing two of the essential tasks of life, eating and speaking.** *Feine, Jocelyne S, Carlsson, Gunnar E., Implant Overdentures: The Standard of Care for Edentulous Patients, Quintessence Publishing 2003*
- **Complete and partial tooth loss is associated with reduced physical, psychological, and social function and as well as chewing ability; increased disability and handicap; and potential detriment to overall health.** *Jones JA, Orner MB, Spiro A, Kressin NR., "Tooth loss and dentures: patients' perspectives." International Dental Journal, 2003, 53, 327-334*

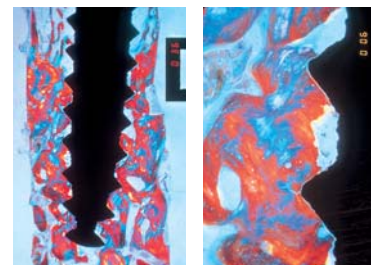
"The ATLAS implant system is designed to overcome known technical restrictions of: parallelism, space, stress and other significant limiting obstacles of edentulous patients. The deficiencies of bone volume, limiting space and high cost are substantially reduced for more patients so they can enjoy the benefits of implantology with secure retention and chewing comfort."

—Bernard Weissman
Creator, Atlas Implant System

- **According to world renowned dental clinician and educator Gordon Christensen, DDS, there are numerous simple implant restoration systems, as well as courses about how to use them, on the market. So, there is no reason not to include surgical placement of implants in the practice.** *Matt Schlossberg, "Incorporating Implants," Academy of General Dentistry, www.agd.org/library/2004/july/schlossberg.asp*
- **Small diameter implants with flapless surgery to support conventional dentures present a method of restoring patients with an atrophic mandible without any bone augmentation surgery.** *Tai CH, Kim TS, Cho S-C, Froum S, Elian N, Tarnow D., "Immediate Loading of Small Diameter Implants in Severely Atrophic Mandibles: A Case Report." New York University College of Dentistry, Department of Periodontics and Implant Dentistry, Dec. 2005*
- **Studies suggest that patients enjoy a higher quality of life, greater self-confidence, and a better nutritional state when conventional dentures are replaced with implant-retained overdentures.** *Henry K., "Q&A on the future of implants", Dental Equipment & Materials, September/October 2006*
- **Dentures supported by Dentatus Atlas implants provided immediate occlusal loading and function with a high survival rate of implants (94.1%) and patient satisfaction (100%).** *Tai CH, Lee MC, Saito H, Classi A, Cho S-C, Froum S, Elian N, Tarnow D., "Immediate Loading of Narrow Diameter Implants with overdentures in Severely Atrophic Mandibles: Practical Procedures & Aesthetic Dentistry, April 2007, Vol. 19, No. 3*

"Conclusion: The percentage of BIC achieved with Tis was similar to that documented in the literature for conventional turned, machine-surface implants."

Dr. Stuart Froum et Al. "Histologic Evaluation of Bone-Implant Contact of Immediately Loaded Transitional Implants After 6 to 27 Months". The International Journal of Oral & Maxillofacial Implants, Vol. 20, No. 1-2005



Histology of Dentatus Narrow Body Implants

THE SIMPLE SOLUTION FOR YOUR DENTAL PRACTICE

The narrow diameter ATLAS implant is designed to retain lower dentures for patients with moderate to severely resorbed bone. ATLAS Implants utilized with Tuf-Link™ silicone reline material provide cushioned support and stabilization with gentle, firm retention while distributing the chewing force on the ridge and implants, **all without housings, O-rings or adhesives.**

The ATLAS minimally invasive procedure without a surgical flap dramatically reduces chair time and the simple technical steps make it vastly more affordable to many patients. Because the implants can be immediately loaded and cushioned, patients can walk into your office and leave within an hour or less with a comfortable, stable denture.

For information on the retention of removable partials and upper dentures please contact Dentatus.

"I've used Atlas Denture Comfort and the fact that you can fit a denture to the Atlas implants more simply, with less hardware, with fewer steps— in addition to the procedure being non-invasive — is what attracts me to it."

— Nels Ewoldsen, DDS
Dentist

The clinically tested and proven ATLAS titanium alloy implants for long-term use are lauded by patients that have regained their self-esteem and natural chewing function.

THE SIMPLE SOLUTION FOR YOUR PATIENTS NEEDS

If you're currently offering implant dentistry to your patients, ATLAS solves the all-too-familiar objections you and your team hear from patients, "Wow, I had no idea implants were so expensive!" or "I just can't take so much time off work." The ATLAS protocol solves the problems of costly implant procedures for many patients who must forego the comforts of implant-retained restorations because of constraints due to time, bone or money.

If you're currently not offering implant dentistry to your patients, ATLAS is the place to start. The easy to maintain, small number of components will simplify your assistants need to have them ready for the procedure. Whether you are an experienced implantologist, prosthodontist or manage a restorative general practice, ATLAS will help you offer the highly productive treatment to many more patients within their financial means.



" When I received the Atlas Denture Comfort procedure, I became a different person; I feel wonderful; and I am very happy with myself and how others compliment the way I look."

— Janina, New York, NY
Patient

PRODUCT INFORMATION

Atlas Intro Kit - AK

- Profile Drill (short)
- Sizing Reamers (2.2 & 2.4 dia.)
- R/A Implant Driver
- Manual Implant Driver
- Denture Forming Instruments (4)
- Sterifix Cassette

Sterile Implants Titanium Alloy (2/pkg.)

- AT-22S- R 2.2 x 7mm
- AT-22M-R 2.2 x 10mm
- AT-22L- R 2.2 x 14mm
- AT-24S- R 2.4 x 7mm
- AT-24M-R 2.4 x 10mm
- AT-24L- R 2.4 x 14mm

Tuf-Link - TK-10

- 10ml Silicone Dispenser (2)

Tuf-Link - TK-50

- 50ml Silicone Dispenser w/10 tips

Mixing Gun - TK-G

- For use with TK-50

Manual Power Driver - MPD

Manual Power Driver Bit - MPD-AT

- Atlas MPD driver bit

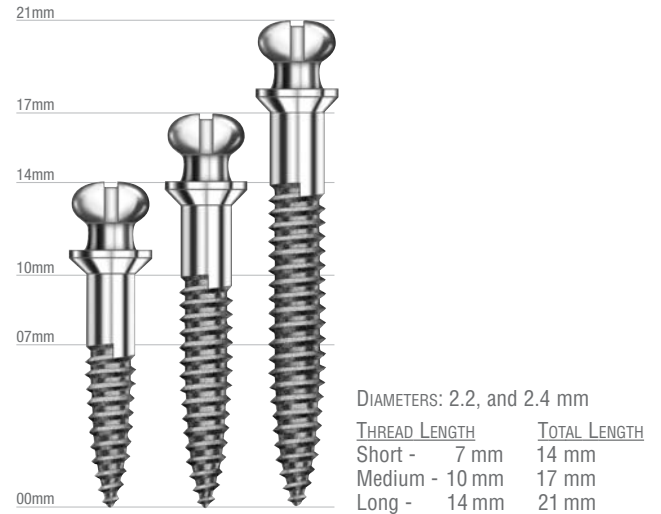
Denture Comfort Counter Stand - AM-1

Denture Comfort Office Poster - AM-2

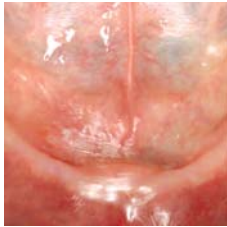
- 22" x 28" (56cm x 71cm)

Denture Comfort Brochures - AM-3

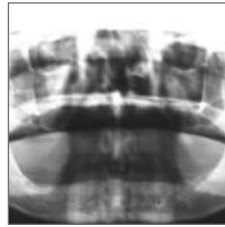
- 100 Brochures/ pkg.



ATLAS® SIMPLE TECHNIQUE



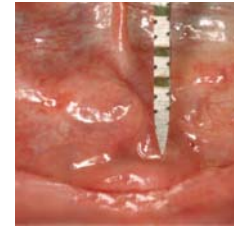
1. Severely Atrophied Alveolar Ridge



2. Radiographic Edentulous Ridge



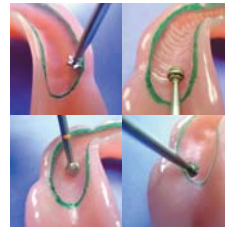
3. Flapless Osteotomy with Pilot Drill



4. Osteotomy-Refining Reamer



5. Placed Implants between the Mental Foramen



6. Denture Base Preparation



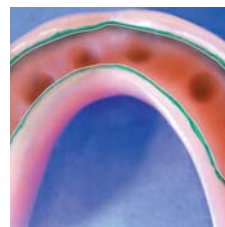
7. Hollow marked denture



8. Hollowed denture marked for implants



9. Expelled Tuf-Link



10. Denture with spaces for implants



11. Post-Op Panoramic View



12. One-Visit Retrofitted Denture

CONSUMER DIVISION FOR ATLAS IMPLANT SYSTEM



Denture Comfort™, implemented to answer the questions and needs of an estimated 40-50 million Americans who suffer with ill-fitting dentures, while acting as a referral source for patients to locate dentists who offer the Atlas Denture Comfort procedure.

ATLAS® WE WILL HELP YOU GET STARTED

- **Marketing Support**

We've done the work for you! We have created a marketing support program offering: Office Posters, Patient Brochures & Counter Stands, Patient Education Models, Press Releases, Photos & Ad Slicks that can be personalized for your office... and more.

- **Consumer Website**

We're driving patients to you with www.denturecomfort.com. Patients can learn all about the procedure that can put an end to denture problems. They will also find answers to common questions, qualified dentists in their area, and regularly updated articles and industry research.

- **Hands-on Workshops**

Participate in real time procedure installing the Atlas Implants in a hard model. Learn how to retrofit the denture and reline it with the Tuf-Link silicone material. All steps and instruments are precisely the same as you will use in your office. You will have your own made model for showing the benefits to your prospective patients.

Call us at +1-800-323-3136 or visit our website: www.dentatus.com for more information about Atlas and our other Implant lines and for upcoming courses in your area.

