



ANNOUNCING THE FIRST
SCREW ATTACHED
PROVISIONAL RESTORATIONS

*The Dentatus
Standard of Excellence*

AnewTM Implants

*With small interactive components for
fixed restorations, emergency repairs, and
screw-attached splints for retrofit dentures*

***Anew Implant-restorative protocol developed in
conjunction with the Department of Implant Dentistry,
New York University College of Dentistry***

*Dentatus endosseous implants
cleared by the FDA for long-term use.*

DESIGNED TO FIT WHERE NO OTHERS CAN

Introducing...Anew

The First Screw Retained Provisional Implant System

The Anew - Dentatus Implants, successors to the original first approved MTI Transitional Implants, in continuous use since 1993, have been validated in over 50 clinical papers describing their utility and safety. The pure ti Implants used internationally in private practice and in university implant centers with monitored clinical results and histological studies, show superb bone adaptation comparable to levels of definitive fixtures.

The prosthetic implant integrated system, with a non-hygroscopic screwcap attached restoration, is a major development in implantology. The Anew - solid implant construction, with screwcap attached restoration, are designed for first visit replacement of missing teeth.

Anew – resin screwcap passively assembled restorations, removable without force, prevent distortion of the prosthesis and overcome metal screw fatigue that can

create irreparable damage to implant fixtures. Anew - user-friendly components provide unprecedented opportunities for single, multi-unit, and large restorations, as they can be placed in narrow ridges and in limiting, approximating roots and teeth and minimal occlusal spaces.

Implant-supported restorations may be left in place for time-frames decided by professional care providers. When no longer needed, the implants can be removed by backing them out without bone damage or patient discomfort.

Dentatus AB, founded in 1930, continues to maintain its world leadership position with distinctive cutting-edge products and implant-pros. integrated components.

The Anew Dentatus patented signature design system provides elegant solutions for finer dentistry.

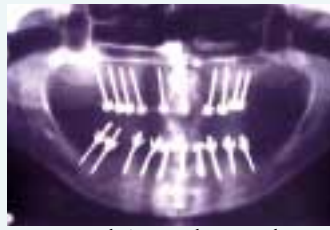
Anew Implant supported Fixed Bridge retained with resin Screwcaps



Anew installed Implants



Occlusal View



X-Ray with Anew and MTI Implants



Lab. Bridge in place with Screwcaps

Immediate Denture Supported Splint with 6 Anew Implants



Anew Installed Implants



Chairside Constructed Splint



Two week Post-op



Retrofitted Denture with Reline



Pre-op Profile



Corrected, Post-op Profile

Anew Immediate Stabilization and Repair of Failed Bridge



Temporary Bridge Try-in



Pre-op Palatal View



Anew Implant Installation



Bone Block Augmentation



Tested Index Copings with Screwcaps Assembly



Screwcaps with Copings attached to the restoration



Relined bridge with Anew Components



Soft Tissue 2 Week Post-op



X-ray 1.8 & 2.4 Anew Implants



Anew Screwcap Entry plugged with temporary Resin



Completed Screwcap Attached Restoration

*Clinical Procedures Courtesy:
Dr. Ziv Mazor, Private Practice*

Anew™ “The First Screw Retained Provisional Implant System”

THE CHOICE FOR YOUR FIRST NEEDS:

- Single, multi-unit, or full-arch immediate chairside made restorations
- Protecting graft sites in ridge bone augmentation, adaptation intervals
- Instant support for non-retentive or failing abutments and restorations
- Emergency repairs and bridge stabilization
- Stabilizing existing and new dentures with splinted Screwcap security
- Orthodontic anchors for tooth movement and orthognathic jaw repositioning

ORDERING INFORMATION

Anew - Refill Pack Selection:

4 ASSEMBLED IMPLANTS AND ACCESSORIES

1.8mm	SR-18S	SR-18M	SR-18L
2.2mm	SR-22S	SR-22M	SR-22L
2.4mm	SR-24S	SR-24M	SR-24L
LENGTH	S-7MM	M-10MM	L-14MM

Anew - Starter Kit:

6 MED. LENGTH ONE SIZE ASSEMBLED IMPLANTS WITH A MATCHING SIZE REFINING REAMER INCLUDING THE LISTED COMPONENTS AND INSTRUMENTS THAT ARE INTERCHANGEABLY USED WITH ALL IMPLANT SIZE AND LENGTH.

INDIVIDUAL COMPONENTS



1. Profile Drill - Long & Short
2. Reamer w/ Laser Marks for the 1.8, 2.2, 2.4 Dia. Implants
3. Ti Implants - in 3 Dia. and length
4. Brass Cap Plug with Seal
5. Screwcap
6. Silicon Connector Sleeve

7. Ti Index Coping
8. Silicon Gingival Sleeve
9. Short Brass Driver
10. Long Chisel-End Driver
11. R/A Hpc. Snap-In Implant Driver
12. Manual Snap-In Key Driver
13. Screwcap Space Refining Reamer

14. Hollow Trepine Drill
15. Reinforcing Ti Bar
16. Flexible Splint Form - Long & Short
17. Brass Analog
18. Transfer Coping
19. Lab Screwcap
20. Lab Screwcap Driver

Dentatus AB
Jakobsdalsvägen 14-16 SE126 53 Hägersten Sweden
Tel: + 46-8-546-509-00
Fax: + 46-8-546-509-01
Email: info@dentatus.se



Dentatus USA, Ltd.
192 Lexington Ave. New York, NY 10016
Telephone: 800-323-3136, 212-481-1010
Fax: 212-532-9026
Email: dentatus@dentatus.com

Dentatus AB is certified to ISO 9001/ISO 13485

www.dentatus.com